



BOLT BINS

CATALOG 2025

- ✓ Made in USA since 1977
- ✓ Designed, engineered, and manufactured at our West Michigan plant
- ✓ High quality small part storage solutions

www.bolt-bins.com

ABOUT US:

Located in Otsego, Michigan, Bolt Bins has been an industry leading manufacturer of small part storage bins, drawers, and cabinets since 1977. We pride ourselves on top quality design, assembly, and finishing of all our products.

We are proud to say our products are Made in USA by our experienced staff. Our in-house engineering and design team allows us to adapt to the market and meet our customers' every need.



"YOUR SMALL PARTS STORAGE SOLUTION!"

OUR PRODUCT LINE



Part Bins



Slide Racks



Compartment Boxes



Drawer Cabinets

✓ ***Inventory in stock***

✓ ***Custom options available***

✓ ***Fast shipping (LTL & small parcel)***

✓ ***Built to last products***

PART BINS



PN: 7772



PN: 7740



PN: 8056



PN: 7942



PN: 7936



PN: 8032



PN: 8024



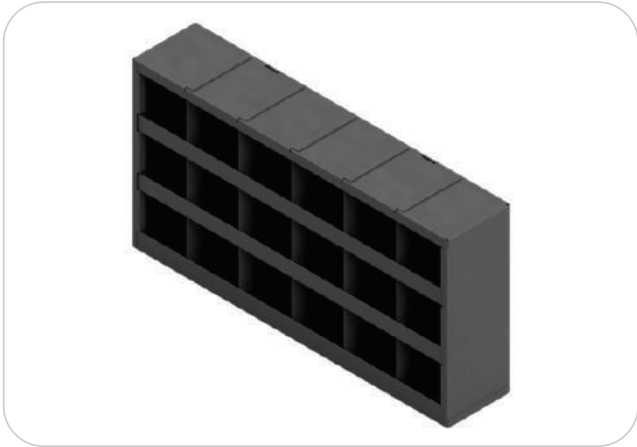
PN: 8016

Part #	Compartments	Compartment Size (W x H)	Dimensions (W x H x D)	Ship Weight
7772	72	4" x 4-5/8"	35" x 42" x 12"	120 lbs
7740	40	4" x 4-1/8"	35" x 21" x 12"	50 lbs
8056	56	4-3/4" x 5-1/4"	35" x 42" x 12"	101 lbs
7942	42	5-1/2" x 6"	35" x 42" x 12"	91 lbs
7936	36	4" x 4-5/8"	17-1/2" x 42" x 12"	60 lbs
8032	32	4" x 4-5/8"	35" x 19" x 12"	53 lbs
8024	24	5-1/2" x 6"	35" x 24" x 12"	55 lbs
8016	16	4" x 4-5/8"	35" x 10" x 12"	32 lbs

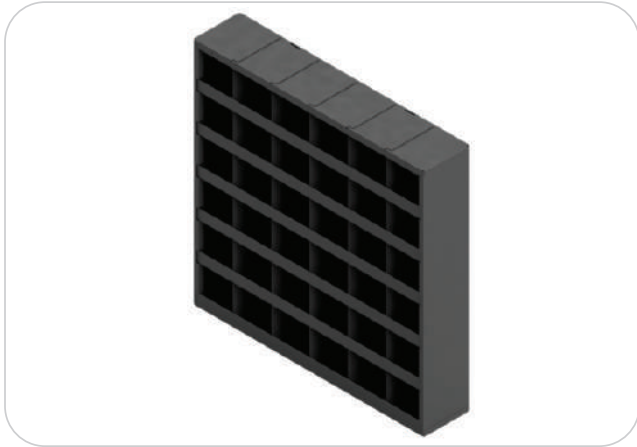
Part Bin Highlights

- ☑ Quality construction
- ☑ Heavy-duty high quality steel
- ☑ Interlocking parts – Interlocking design to ensure strength
- ☑ Spot welded throughout – Secures all interlocking parts for the strongest cabinet
- ☑ Half-inch hemmed lips – Adds an extra margin of safety and strength
- ☑ Baked enamel finish – Superior and durable coating method
- ☑ "Stay In" cubby design – Keeps parts from sliding out
- ☑ Shipped fully assembled – No bolts to tighten, ready to use

ADJUSTABLE PART BINS



PN: 2418A



PN: 2436A

Part #	Compartments	Compartment Size (W x H)	Dimensions (W x D x H)
2418A	18	4" x 4-5/8"	23-3/4" x 4-3/4"x 12-1/4"
2436A	36	4" x 4-5/8"	23-3/4" x 4-3/4"x 23-3/4"

PART BIN ACCESSORIES



PN: 18SBT



PN: 7800



PN: 7840



PN: 9000 or 9010

Part Number	Description	Dimensions (W x D x H)	Ship Weight
18SBT	Bin Topper – Fits all 35" wide bins	35" x 12"	50 lbs
7800	6" Tall Base – Fits all 35" wide bins	35" x 12" x 6"	10 lbs
7840	16" Tall Base – Fits all 35" wide bins	35" x 12" x 16"	15 lbs
9000	Bins Doors – Set of 2 – Fits 7772, 7942, 8056	35" x 42"	25 lbs
9010	Bin Doors – Set of 2 – Fits 7740	35" x 21"	13 lbs

SLIDE RACKS



PN: 8720



PN: 8710



PN: 8719



PN: 8709

Part Number	Description	Dimensions (W x D x H)	Ship Weight
8720	4 Drawer Slide Rack	20-3/8" x 14-1/4" x 16"	45 lbs
8710	4 Drawer Slide Rack (Small)	15-1/2" x 11-1/2" x 12"	22 lbs
8719	2 Drawer Slide Rack	20-3/8" x 14-1/4" x 8 3/4"	20 lbs
8709	2 Drawer Slide Rack (Small)	15-1/2" x 11-1/2" x 6-3/4"	14 lbs
885	6" Slide Rack Base – Fits 8719, 8720	20-3/4" x 14-3/4" x 6"	6 lbs
20SRT	Slide Rack Topper – Fits 8719, 8720	20-1/4" x 9-1/2" x 12-3/4"	8 lbs

Slide Rack Cabinet Highlights

- ✓ Premium heavy-duty roller bearing glides for smooth operation
- ✓ Shipped fully assembled – no additional assembly required
- ✓ Positive drawer stops
- ✓ Baked enamel finish – Superior and durable coating method
- ✓ Spot welded for superior construction



HOSE CABINETS

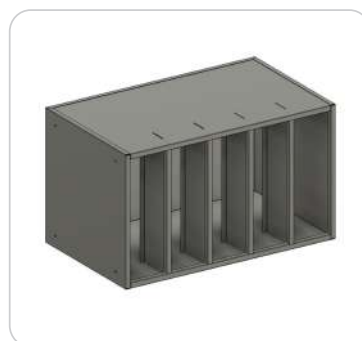
Part Number	Description	Dimensions (W x D x H)	Ship Weight
2502	2 Slot Hose Cabinet	16-5/8" x 24" x 21-7/8"	35
2503	3 Slot Hose Cabinet	24 1/2" x 24" x 21-7/8"5	45
2505	5 Slot Hose Cabinet	40 1/8" x 24" x 21-7/8"5	85

Hose Cabinet Highlights

- ✓ Open face design features 6 7/8" x 20" slots for hose storage
- ✓ Ideal for hydraulic and shop air hoses
- ✓ Features hole pattern to allow linking cabinets together



PN: 2503



PN: 2505

STEEL COMPARTMENT BOXES



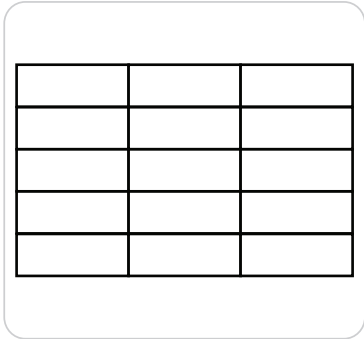
PN: 8800

Multiple insert configurations available!

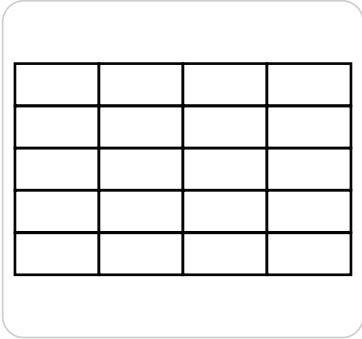
Insert layouts shown below, boxes included with all styles.



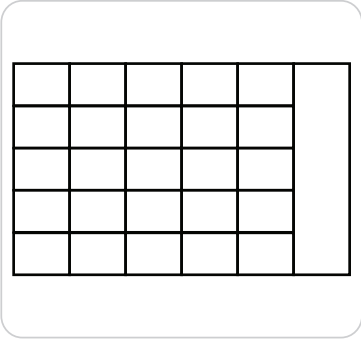
PN: 8700



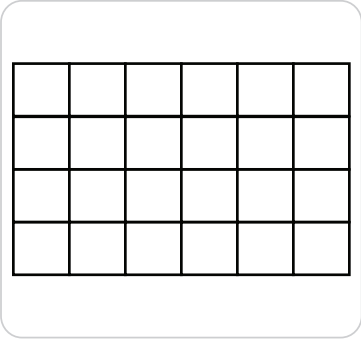
PN: 8801



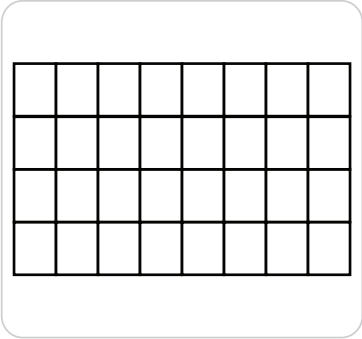
PN: 8802



PN: 8701



PN: 8702



PN: 8703

Part #	Description	Dimensions (W x H x D)	Ship Weight
8800	Large Steel Box (No insert or dividers)	18" x 3" x 12"	5 lbs
8700	Large Box w/ Adjustable Plastic Insert	18" x 3" x 12"	8 lbs
8801	Large Box w/ 15 Compartment Insert (3 x 5)	18" x 3" x 12"	8 lbs
8802	Large Box w/ 20 Compartment Insert (4 x 5)	18" x 3" x 12"	8 lbs
8701	Large Box w/ 21 Compartment Insert (5 x 4 + Slot)	18" x 3" x 12"	8 lbs
8702	Large Box w/ 24 Compartment Insert (6 x 4)	18" x 3" x 12"	8 lbs
8703	Large Box w/ 32 Compartment Insert (8 x 4)	18" x 3" x 12"	8 lbs
8704	Plastic Dividers for 8700 – Set of 50	-	3 lbs

DRAWER CABINETS



PN: 8118



PN: 8124

Part Number	Drawers	Drawer Size (W x H x D)	Dimensions (W x H x D)	Partitions	Ship Weight
8118	18	5-3/8" x 2-3/4" x 11-1/4"	35" x 10-3/4" x 11-1/2"	36	50 lbs
8124	24	5-3/8" x 2-3/4" x 11-1/4"	35" x 14-1/4" x 11-1/2"	48	60 lbs
8106	6	5-3/8" x 2-3/4" x 11-1/4"	35" x 4" x 11-1/2"	12	21 lbs
8306	6	5-3/8" x 2-3/4" x 11-1/4"	12" x 10-3/4" x 11-1/2"	6	21 lbs
8109	9	5-3/8" x 2-3/4" x 11-1/4"	17-1/8" x 10-3/4" x 11-1/2"	18	25 lbs

DRAWER CABINET ACCESSORIES



PN: 8103



PN: 8104

Part Number	Description	Dimensions (W x H x D)	Ship Weight
8103	Box of 6 Steel Drawers, No Partitions	5-3/8" x 2-3/4" x 11-1/4"	10 lbs
8104	Box of 100 Steel Partitions Only	5-1/8" x 2-7/8"	5 lbs
8125	15" Tall Base for 8118, 8124	34" x 15" x 11-3/4"	15 lbs

MISC PRODUCTS



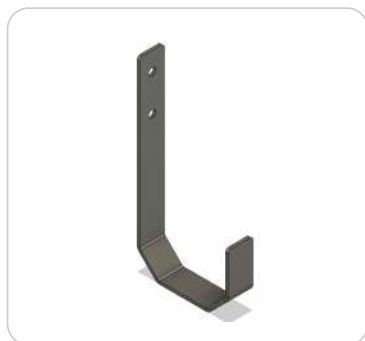
PN: 7820



PN: 7810



PN: 9006



PN: HCH-0



PN: 9002

Part #	Description	Dimensions (W x H x D)	Ship Weight
7820	Key Stock Rack – 10 Holes (1.5" x 1.5")	10-1/2" x 6" x 4-5/8"	3 lbs
7810	Threaded Rod Rack – 10 Hole (2 1/2" D)	16" x 16" x 7-1/2"	8 lbs
9006	Spray Can Caddy – 3" Diameter Holes	21" x 5-3/8" x 3-7/8"	4 lbs
9002	Oil Can Rack – 10" Wide Compartments (2)	20-5/16" x 4-1/4" x 4-3/4"	6 lbs
HCH-0	Hose & Cord Hook	7-1/2" x 1" x 5"	1 lbs

BOLT BINS

557 Lincoln Road, #5, Otsego, MI 49078

Email : sales@bolt-bins.com

Phone : 269-694-2727

Website : www.bolt-bins.com



CUSTOM FABRICATION SERVICES AVAILABLE



Visit www.micutt.com to inquire about custom sheet metal fabrication services!

✓ Fiber Laser Cutting

✓ CNC Sheet Metal Bending

✓ Custom Parts, Fast!